

SPIKE BARS

WOW

SPIKE BARS

What if we reinvent the Sweet Bars Collection?

Now we're betting on diagonals, with a completely new format,
fresh colors and matt and gloss finishes.

Turning ideas into reality!

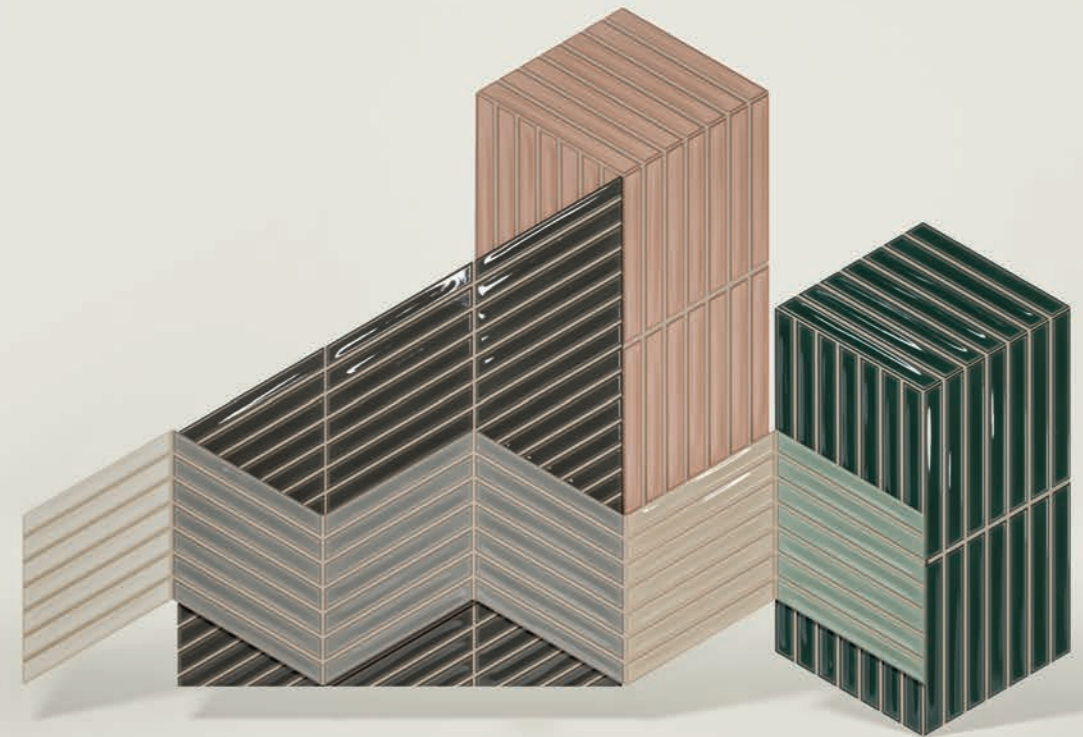
-

¿Y si reinventamos la colección Sweet Bars?

*Ahora apostamos por las diagonales, con formato completamente nuevo,
colores frescos y acabados en mate y brillo.*

¡Transformando ideas en realidad!

01. SIZES, COLOURS AND FINISHES / FORMATOS, COLORES Y ACABADOS	<i>pag. 4</i>
02. GET INSPIRED / INSPIRATE	<i>pag. 6</i>
03. LAYOUTS / COLOCACIONES	<i>pag. 26</i>
04. TECHNICAL FEATURES / CARACTERÍSTICAS TÉCNICAS	<i>pag. 28</i>
05. PACKING	<i>pag. 29</i>
06. PRICE CODE / CÓDIGO DE TARIFA	<i>pag. 29</i>
07. TECHNICAL DRAWINGS / DIBUJOS TÉCNICOS	<i>pag. 30</i>
08. RECOMMENDATIONS / RECOMENDACIONES	<i>pag. 31</i>





SPIKE BARS 15x25,9 cm / 6"x10.2"



Talc Matt



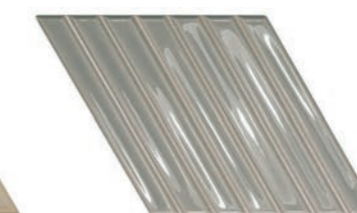
Earth Matt



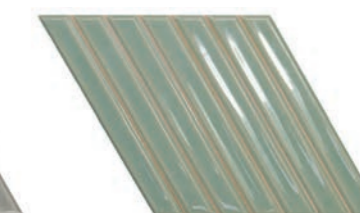
Deep White



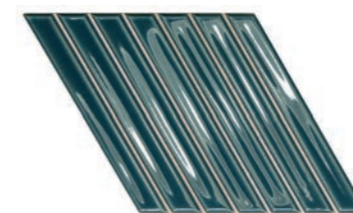
Greige



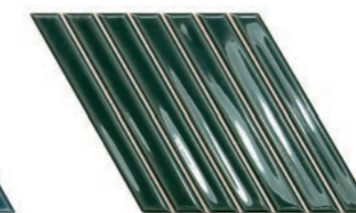
Mineral Grey



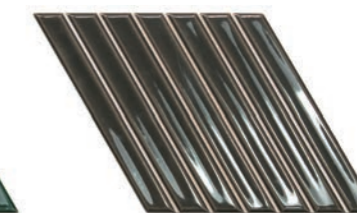
Fern



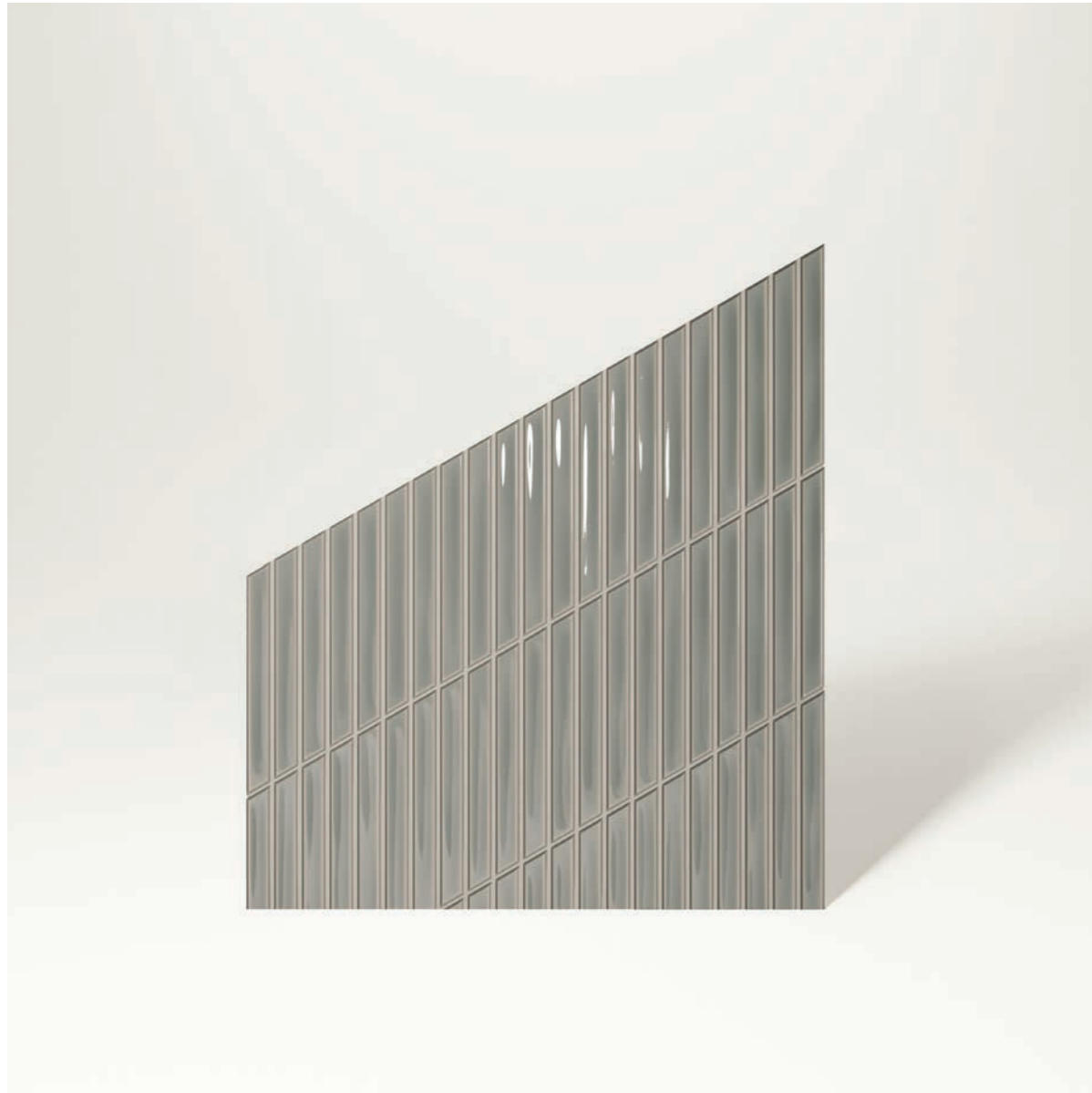
Peacock Blue



Royal Green



Ebony



Spike Bars B Mineral Grey
Floor: Halo XXL Dawn (Halo Collection)





◀ **Spike Bars** B Deep White 55,55%, B Deep White 22,22%, A Fern 11,11% & B Fern 11,11%

▲ **Spike Bars** A Fern 66,66% & B Fern 33,33%

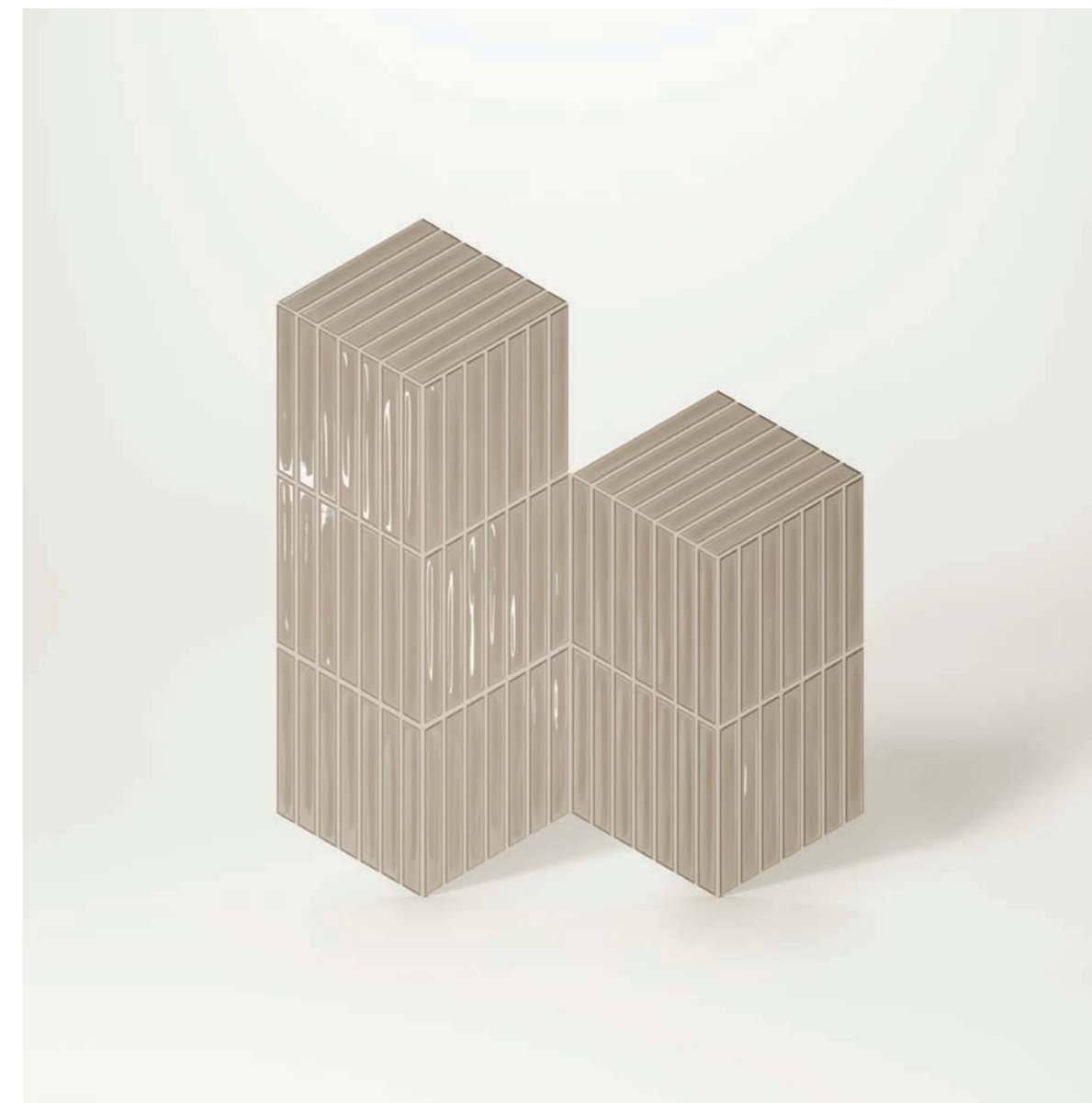
Front Wall: **Spike Bars** A Fern 66,66% & B Fern 33,33%
Floor: *Strip Concrete Light Grey (Love Affairs Collection)*



Spike Bars A Royal Green

Front Wall: Fayenza Square Royal Green (Fayenza Collection)





Spike Bars A Greige 46,5% & B Greige 53,5%

*Floor: Halo S Night & Halo XXL Night (Halo Collection)
Wall: Fayenza Square Greige (Fayenza Collection)*



Spike Bars A Earth Matt 50% & B Earth Matt 50%

Floor: Contempo Strip Oak (Love Affairs Collection)



◀ Spike Bars A Peacock Blue 30% & B Peacock Blue 70%

Table: Fayenza Deep White (Fayenza Collection)
Floor: Halo XXL Dawn (Halo Collection)

▲ Spike Bars A Peacock Blue 50% & B Peacock Blue 50%



Spike Bars A Talc Matt 50% & B Talc Matt 50%





Spike Bars A Ebony 59% & B Ebony 41%

Lateral Walls: Fayenza Square Ebony (Fayenza Collection)



Spike Bars A Earth Matt 50% & B Earth Matt 50%

Floor: Halo XXL Noon (Halo Collection)

Back Wall: IPN INOUT Sand & UPN INOUT Sand (Icon Collection)

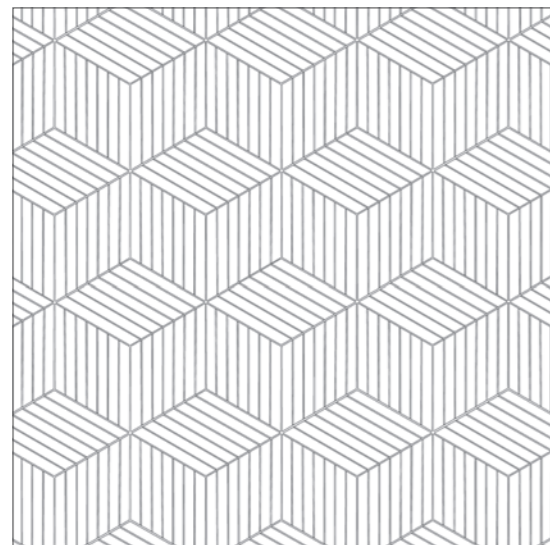




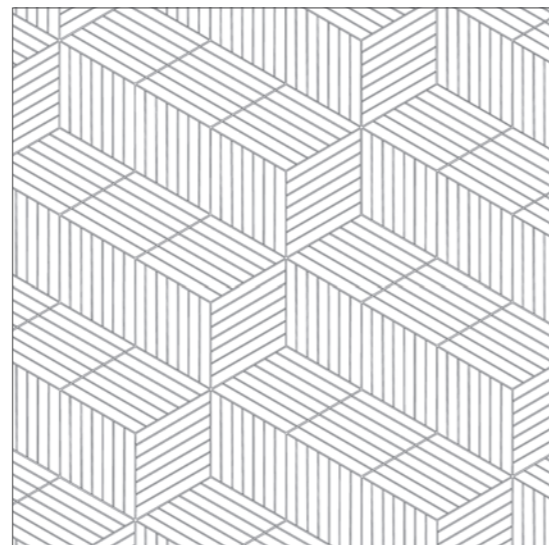
◀ Spike Bars B Deep White 58,4% & B Greige 41,6%

Floor: Halo XXL Dawn (Halo Collection)

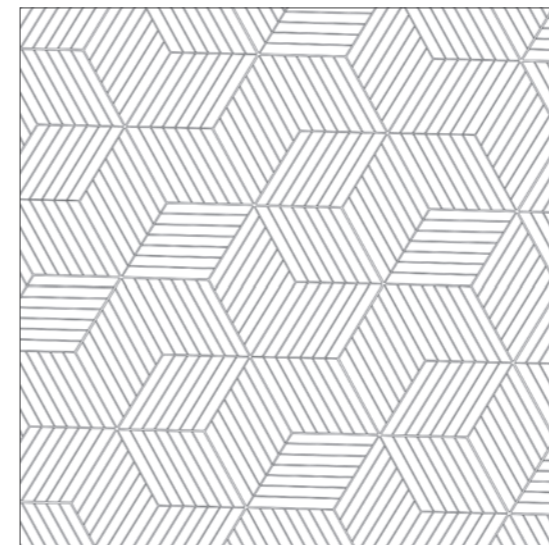
▲ Spike Bars A Deep White 25%, B Deep White 25%,
A Mineral Grey 25% & B Mineral Grey 25%



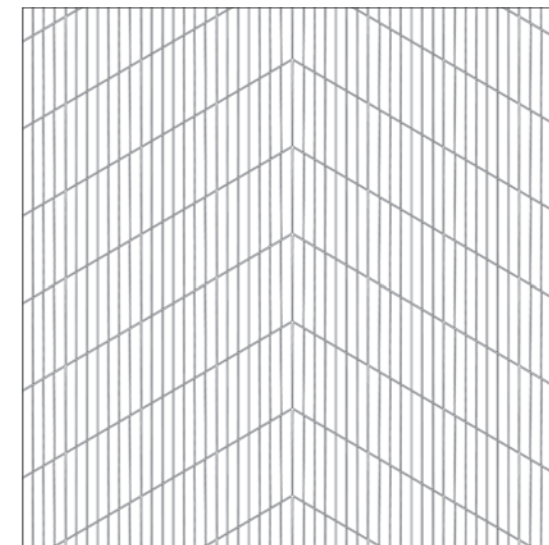
Spike Bars A - 66,66%
Spike Bars B - 33,33%



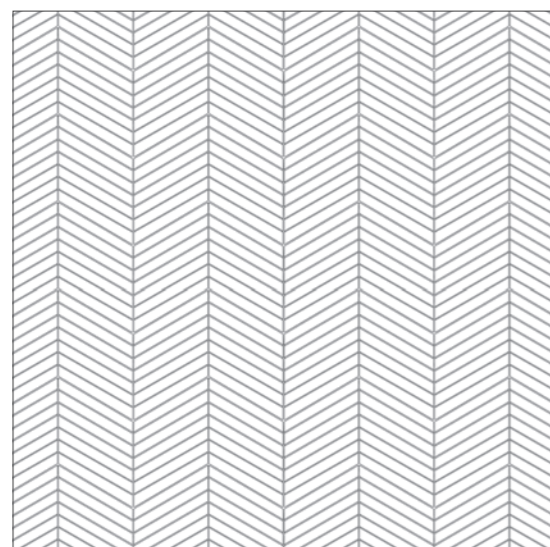
Spike Bars A



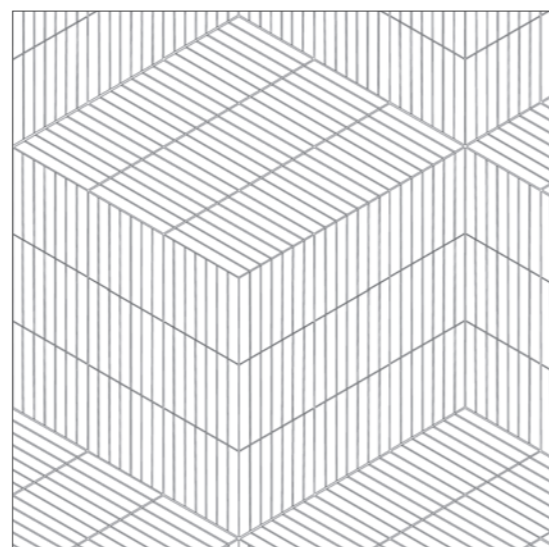
Spike Bars A - 59%
Spike Bars B - 41%



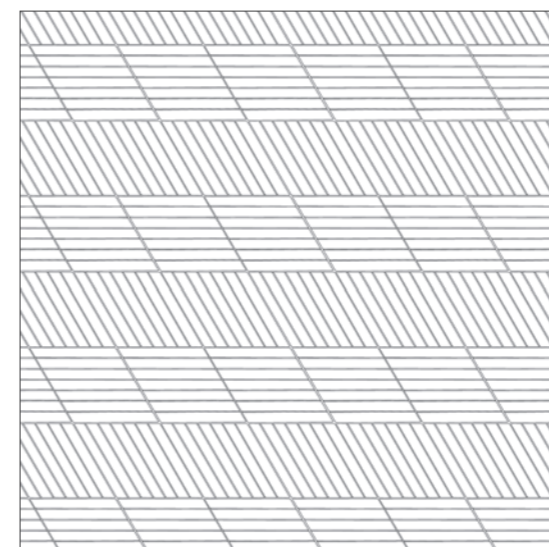
Spike Bars A - 50%
Spike Bars B - 50%



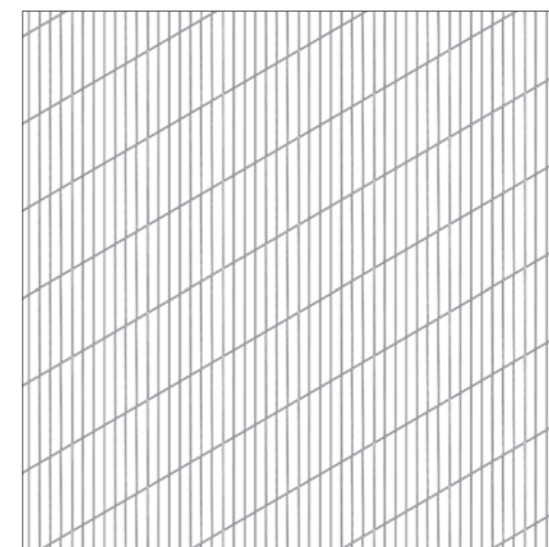
Spike Bars A - 50%
Spike Bars B - 50%



Spike Bars A - 66,66%
Spike Bars B - 33,33%












Spike Bars A - 50%
Spike Bars B - 50%



Spike Bars B







04. TECHNICAL FEATURES / INFORMACIÓN TÉCNICA

Technical features for Dry-Pressed ceramic tiles with water absorption BIII (Eb >10%)
 Características técnicas para las baldosas cerámicas prensadas en seco del grupo BIII (Eb >10%)

FEATURES / CARACTERÍSTICAS	SPECIFICATION / ESPECIFICACIÓN	NORMA
 Dimensional Features	Spike Bars 150,0 mm +/- 0,75 mm x 258,5 mm +/- 1,30 mm	UNE-EN ISO 10545-2:2019
 Water absorption	$E_b > 10\%$	UNE-EN ISO 10545-3:2018
 Modulus of rupture and breaking strength	$\geq 12 \text{ N/mm}^2$ $\geq 600 \text{ N}$	UNE-EN ISO 10545-4:2019
 Crazing resistance	Pass	UNE-EN ISO 10545-11:1997
 Household products resistance	GA	UNE-EN ISO 10545-13:2017
 Chemical resistance	GHA	UNE-EN ISO 10545-13:2017
 Stain resistance	Class 5	UNE-EN ISO 10545-14:2017
 Tone variation	V2	-
 White body	-	-

05. PACKING

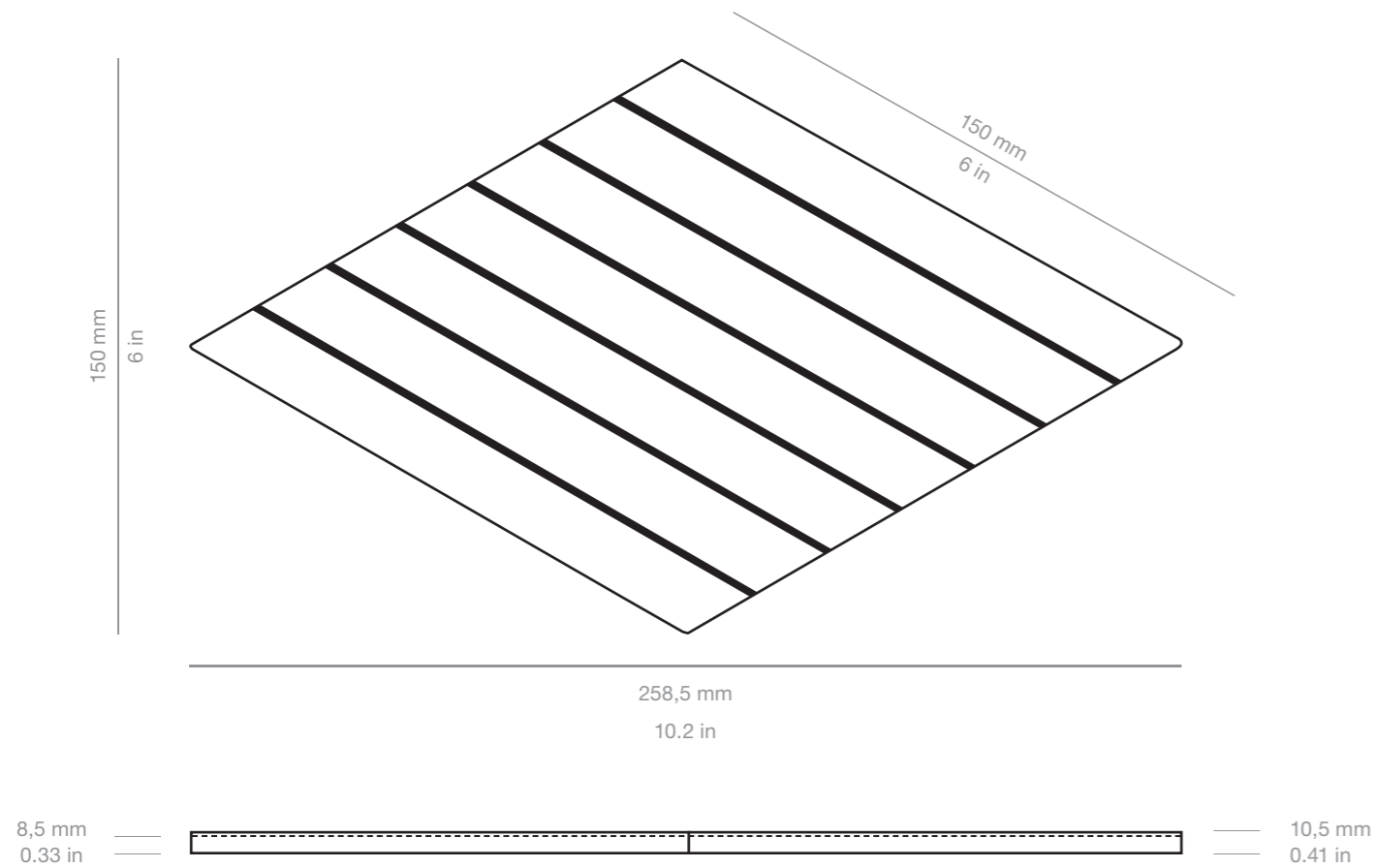
			KG 	M2 		M2 
Modelo	Formato (cm)	Piezas / Caja	Kg / Caja	m2 / Caja	Cajas / Palet	m2 / Palet
SPIKE BARS	15x25,9 cm	15	5,10 kg	0,291 m ²	105	30,56 m ²

			LB 	FT2 		FT2 
Model	Format (in)	Piezas / Box	Lb/ box	sq ft / Box	Boxes / Pallet	sq ft / Pallet
SPIKE BARS	6"x10.2"	15	11.24 lb	3.132 ft ²	105	328.86 ft ²

06. PRICE CODE

MODEL / MODELO	PRICE CODE / CODIGO TARIFA
SPIKE BARS	W32

Spike Bars



BEFORE INSTALLING THE PRODUCT

The surface where the product is being installed must be clean and level.
It is recommended that the layout of the product is prepared before the final installation.
Make sure you choose an adhesive apt for the area where the product is being installed.
For installation on porous surfaces we recommend: Kerakoll Special® Eco, and for Non-porous surfaces: Kerakoll serie H40® Eco.

The choice of quality grouting mortar is crucial.
We recommend Kerakoll Fugabella® Color.
(www.kerakoll.com)

TO ENHANCE YOUR WOW PRODUCT

In order to obtain the maximum WOW effect, use 1,5 mm - 0.06 in spacers between the tiles to maintain an even installation over the whole surface.
The colour of the grout should be as close as possible to the colour of your product.
Once the area has been grouted, and before the grout dries, remove any excess material with a damp sponge.

MAINTENANCE

Maintenance free. Easy and practical to care for, due to the high standard of technical characteristics in each WOW ceramic product.
Avoid abrasive or acidic cleaning products.
It is recommended to clean with clear water.

ANTES DE LA COLOCACIÓN

Preparar la superficie sobre la que se va a colocar tu producto WOW. Debe estar limpia y aplomada.
Se recomienda plantear la colocación, previo a su instalación.
Elegir el material de agarre en función de las características de la superficie.
Se recomienda para colocación general en superficies porosas: Kerakoll special® Eco. y para superficies no porosas como el pladur: Kerakoll serie H40® Eco.

Es importante la elección de un material de rejunte de calidad. WOW recomienda utilizar el material de rejunte Kerakoll fugabella® Color (www.kerakoll.com), cuyas características son especialmente adecuadas para este revestimiento.

PARA ENSALZAR EL ASPECTO DE TU PRODUCTO WOW

Se recomiendan separadores de 1,5 mm para colocar las piezas y conseguir de esta forma un aspecto WOW óptimo.
También es aconsejable que el color de rejuntado sea similar al color del producto elegido.
Una vez rejuntado el producto, y antes de que se endurezca, retirar el material sobrante de rejuntado con una esponja mojada en agua.

MANTENIMIENTO

Práctico y sencillo de limpiar, dadas las excelentes características técnicas del producto WOW, tan sólo es necesario un cuidado rutinario, evitando la utilización de productos abrasivos o ácidos.
Se recomienda limpiar exclusivamente con agua limpia.

Designed by



Polígono Pont, Avda. de España 114
12180 Cabanes,
Castellón (Spain)
t. +34 964 331 910 / f. +34 964 331 911

wowdesigneu.com
comercial@wowdesigneu.com

©2025 WOW Group

WOW, registered trademark of WOW Tiles, S.L.

The brand use or reproduction of the contents of this catalog, is protected by copyright law. Any use of the brand or reproduction thereof, in part or total, must be authorized by WOW Tiles, S.L. Otherwise, this action can be sanctioned according to the Law.

©2025 WOW Group

WOW, marca registrada por WOW Tiles, S.L.

La utilización de la marca o la reproducción del contenido de este catálogo está protegida por la Ley de Propiedad Intelectual. Cualquier uso de la marca o la reproducción del mismo, en parte o en su totalidad, debe ser autorizada por WOW Tiles, S.L., pudiendo, en caso contrario, ser esta acción sancionada de acuerdo con la Ley.

WOW reserves the right to modify and/or discontinue certain models displayed in this catalogue.

The colour of the pieces displayed herein may differ slightly from originals.

The settings shown in this catalogue are design proposals for advertising purposes.

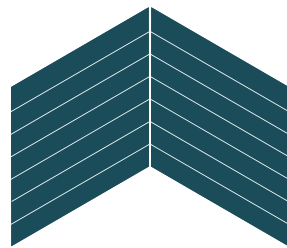
In real situations in which the pieces are laid, the installation instructions published by WOW should be followed.

WOW se reserva el derecho de modificar y/o suprimir ciertos modelos expuestos en este catálogo sin previo aviso.

Los colores de las piezas pueden presentar ligeras diferencias respecto a las originales.

Los ambientes que se muestran en este catálogo son sugerencias decorativas de carácter publicitario, debiéndose utilizar en la instalación real las instrucciones de colocación editadas por WOW.





www.wowdesigneu.com